
Model: KH-100 Heater



2390 Blackhawk Road • Rockford, IL 61125, USA
815-874-7821 • fax 815-874-2144 • 800-499-6849
www.kysorhvac.com



Technical Specifications

- Performance SAE J638 @ 18.2 LPM (4.8 GPM)
10,400 BTU/h
3.0 kW
- Air Flow 90 SCFM
153 SCMh
- Current Draw 3.6 Amps @ 14 VDC

Applications

- Over-the-Road Vehicles
- Industrial Vehicles
- Light Duty Off-Highway Equipment

Features

- Single Source or Auxiliary Heater
- Heavy Duty Steel Construction
- 3-Speed Blower Switch
- Adjustable Water Valve Control
- Durable Single Wheel Plastic Blower
- Recirculating Air Filter
- (2) 4" Directional Shut-off Louvers
- (2) 5/8" O.D. Tube Connections

Warranty

- 1 year limited warranty parts and labor

Model: KH-100 Heater

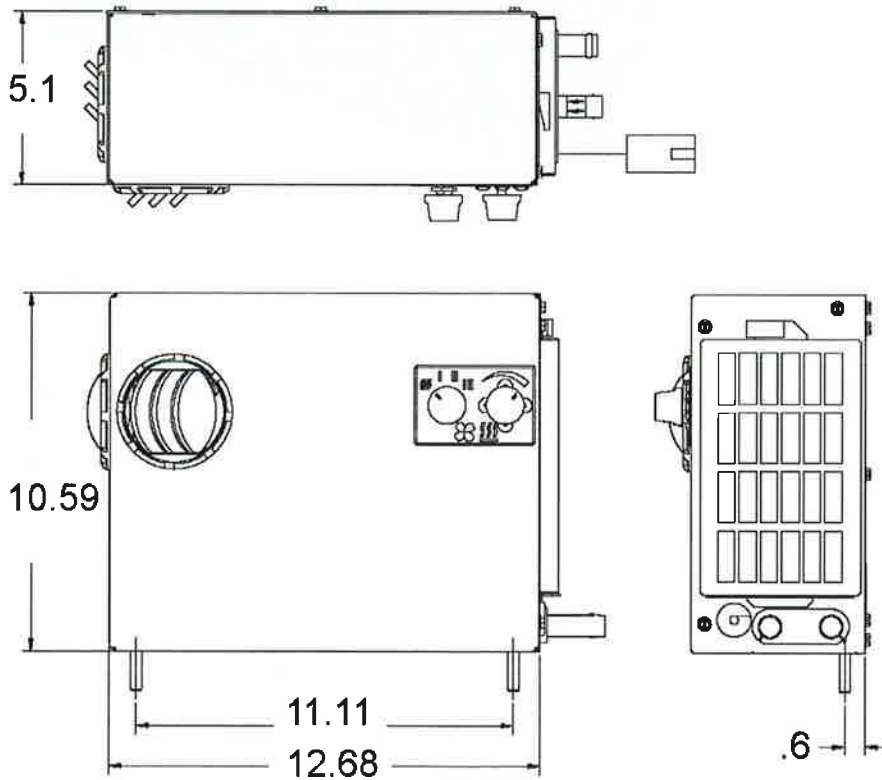


2390 Blackhawk Road • Rockford, IL 61125, USA
815-874-7821 • fax 815-874-2144 • 800-499-6849
www.kysorhvac.com



Weights and Dimensions

• Weight	13 lbs	5.9 kg
• Width	12.7 in	323 mm
• Height	10.6 in	269 mm
• Depth	5.1 in	130 mm



Model: KH-150 Heater



2390 Blackhawk Road • Rockford, IL 61125, USA
815-874-7821 • fax 815-874-2144 • 800-499-6849
www.kysorhvac.com



Technical Specifications

- Performance SAE J638 @ 18.2 LPM (4.8 GPM)
13,000 BTU/h
3.8 kW
- Air Flow 115 SCFM
195 SCMH
- Current Draw 3.6 Amps @ 13.8 VDC

Applications

- Over-the-Road Vehicles
- Industrial Vehicles
- Light Duty Off-Highway Equipment

Features

- Compact Auxiliary Heater
- Heavy Duty Steel Construction
- 2-Speed Motor
- Recirculating Air Filter
- (2) 5/8" O.D. Tube Connections

Warranty

- 1 year limited warranty parts and labor

Model: KH-150 Heater

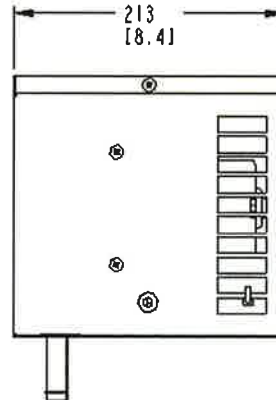
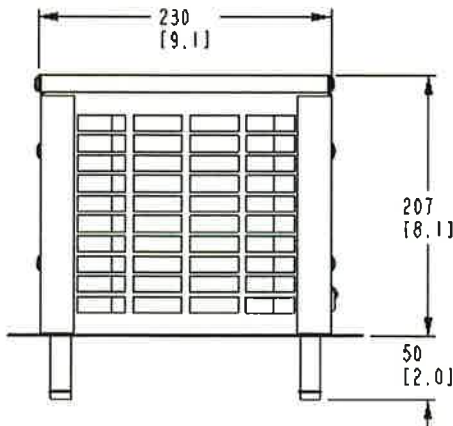
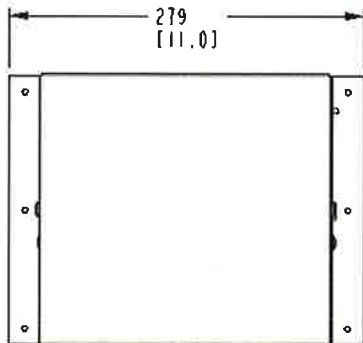


2390 Blackhawk Road • Rockford, IL 61125, USA
815-874-7821 • fax 815-874-2144 • 800-499-6849
www.kysorhvac.com



Weights and Dimensions

• Weight	9.8 lbs	4.5 kg
• Width	11 in	279 mm
• Height	8.1 in	207 mm
• Depth	8.4 in	213 mm



Model: KH-200 Heater



2390 Blackhawk Road • Rockford, IL 61125, USA
815-874-7821 • fax 815-874-2144 • 800-499-6849
www.kysorhvac.com



Technical Specifications

- Performance SAE J638 @ 18.2 LPM (4.8 GPM)
18,360 BTU/h
5.4 kW
- Air Flow 145 SCFM
246 SCMh
- Current Draw 3 Amps @ 13.8 VDC
1.5 Amps @ 27.6 VDC

Applications

- Over-the-Road Vehicles
- Industrial Vehicles
- Light Duty Off-Highway Equipment

Features

- Heavy Duty Auxiliary Heater
- Heavy Duty Steel Construction
- (1) 2-Speed Motor
- (2) 5/8" O.D. Tube Connections
- (2) Universal Mounting Brackets

Warranty

- 1 year limited warranty parts and labor

Model: KH-200 Heater

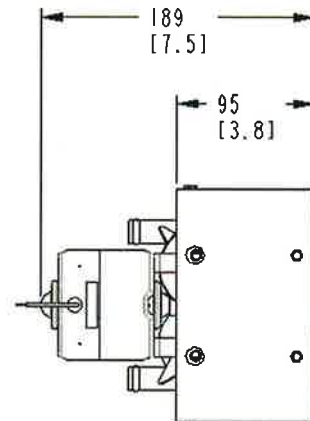
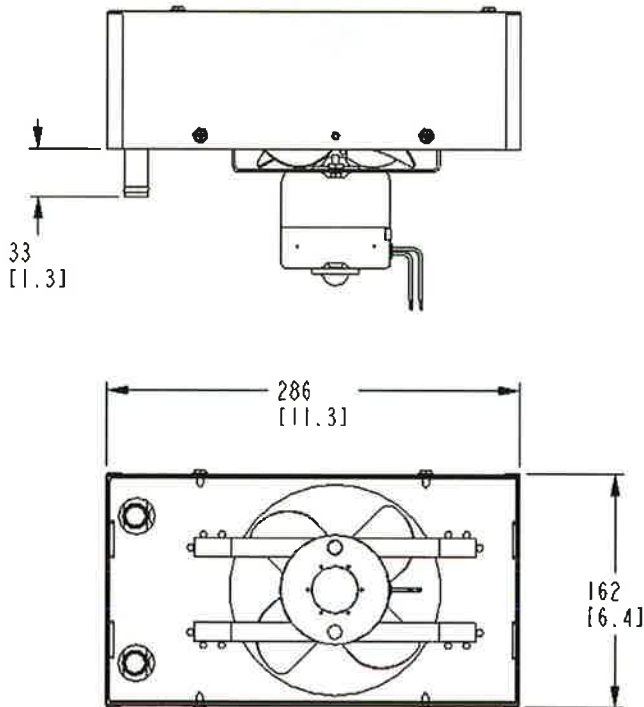


2390 Blackhawk Road • Rockford, IL 61125, USA
815-874-7821 • fax 815-874-2144 • 800-499-6849
www.kysorhvac.com



Weights and Dimensions

• Weight	9 lbs	4.1 kg
• Width	11.3 in	286 mm
• Height	6.4 in	162 mm
• Depth	7.5 in	189 mm



Model: KH-300 Heater



2390 Blackhawk Road • Rockford, IL 61125, USA
815-874-7821 • fax 815-874-2144 • 800-499-6849
www.kysorhvac.com



Technical Specifications

- Performance SAE J638 @ 18.2 LPM (4.8 GPM)
30,000 BTU/h
8.8 kW
- Air Flow 265 SCFM
450 SCMh
- Current Draw 6 Amps @ 13.8 VDC
3 Amps @ 27.6 VDC

Applications

- Over-the-Road Vehicles
- Industrial Vehicles
- Heavy Duty Off-Highway Equipment
- Mining Vehicles

Features

- Heavy Duty Auxiliary Heater
- Heavy Duty Steel Construction
- (2) 2-Speed Motors
- (2) 5/8" O.D. Tube Connections
- (2) Universal Mounting Brackets

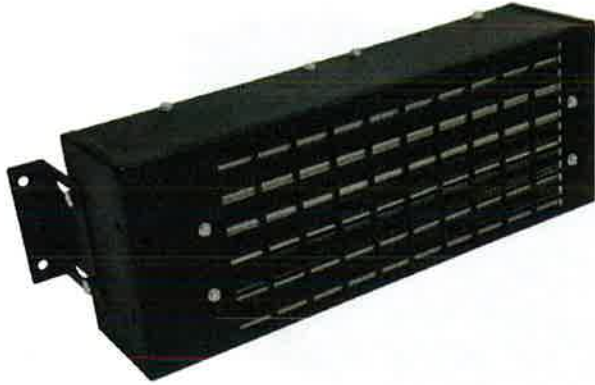
Warranty

- 1 year limited warranty parts and labor

Model: KH-300 Heater

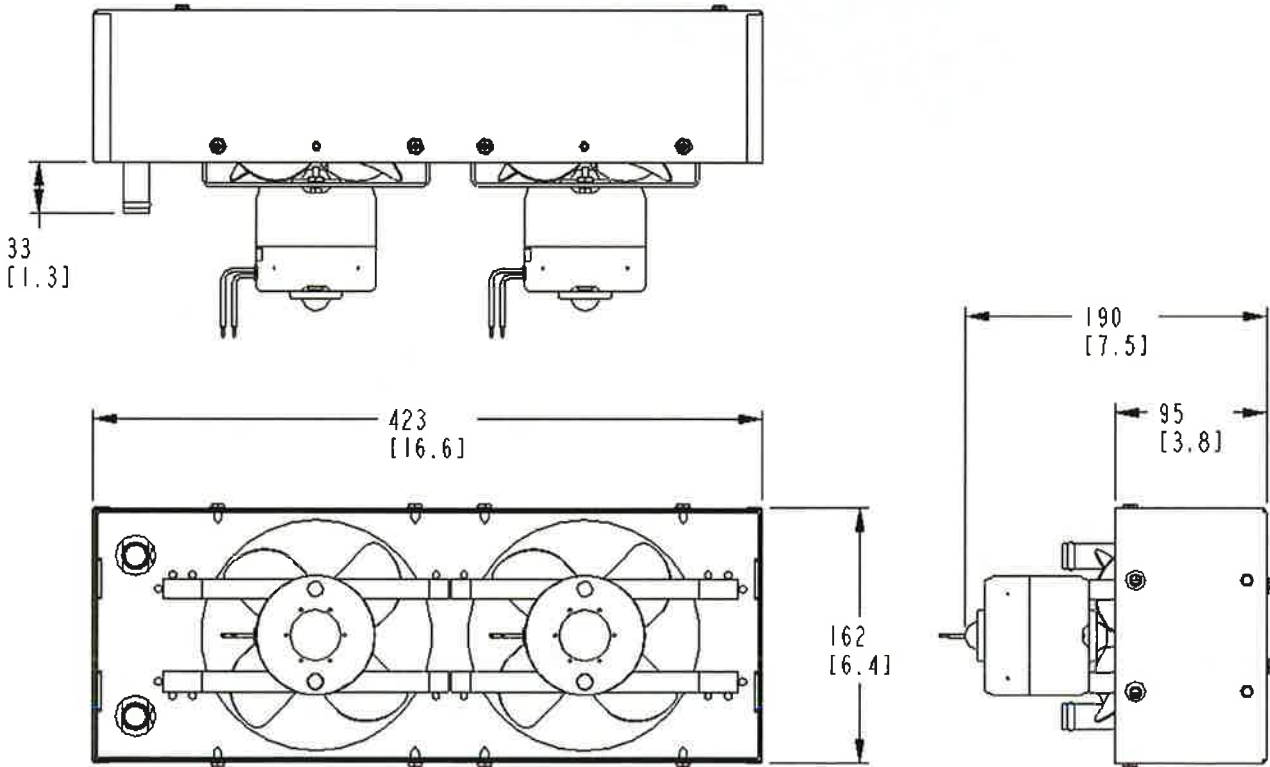


2390 Blackhawk Road • Rockford, IL 61125, USA
815-874-7821 • fax 815-874-2144 • 800-499-6849
www.kysorhvac.com



Weights and Dimensions

• Weight	14 lbs	6.4 kg
• Width	16.6 in	423 mm
• Height	6.4 in	162 mm
• Depth	7.5 in	190 mm



Model: KH-400 Heater



2390 Blackhawk Road • Rockford, IL 61125, USA
815-874-7821 • fax 815-874-2144 • 800-499-6849
www.kysorhvac.com

ISO 9001
Bergstrom
NATIONALLY REGISTERED



Technical Specifications

- Performance SAE J638 @ 18.2 LPM (4.8 GPM)
43,200 BTU/h
12.6 kW
- Air Flow 340 SCFM
578 SCMh
- Current Draw 14 Amps @ 13.8 VDC
7 Amps @ 27.6 VDC

Applications

- Over-the-Road Vehicles
- Industrial Vehicles
- Heavy Duty Off-Highway Equipment
- Mining Vehicles

Features

- Single Source or Auxiliary Heater
- Heavy Duty Steel Construction
- (2) 5/8" O.D. Tube Connections
- Can provide up to (4) air delivery outlets
- Mixing Capabilities
- 4" Air Outlet
- 3-Speed Resistor
- Heavy Duty Steel Blower Wheel

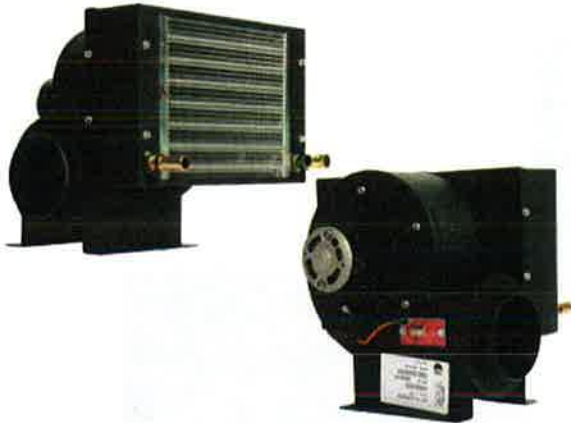
Warranty

- 1 year limited warranty parts and labor

Model: KH-400 Heater

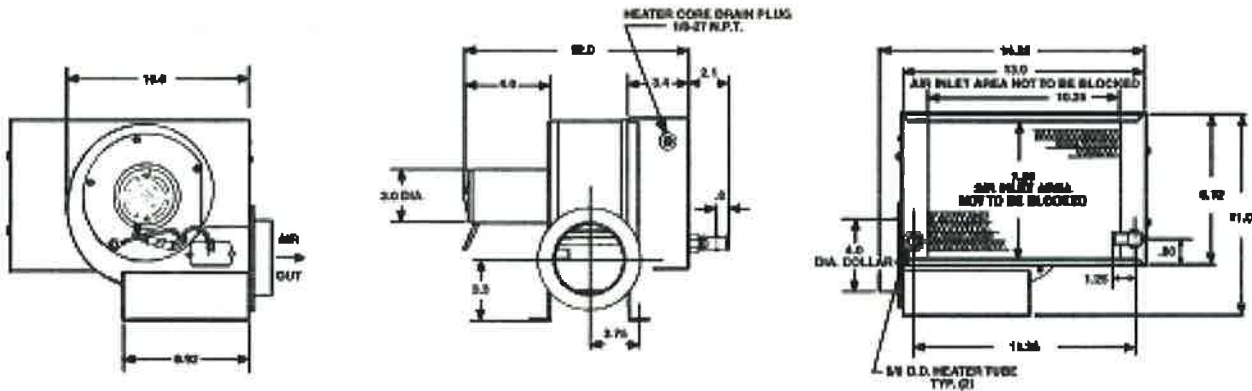


2390 Blackhawk Road • Rockford, IL 61125, USA
 815-874-7821 • fax 815-874-2144 • 800-499-6849
 www.kysorhvac.com



Weights and Dimensions

• Weight	22 lbs	10 kg
• Width	14.3 in	363 mm
• Height	11.3 in	287 mm
• Depth	12 in	305 mm



Model: KH-500 Heater



2390 Blackhawk Road • Rockford, IL 61125, USA
815-874-7821 • fax 815-874-2144 • 800-499-6849
www.kysorhvac.com



Technical Specifications

- Performance SAE J638 @ 18.2 LPM (4.8 GPM)
52,380 BTU/h
15.3 kW
- Air Flow 500 SCFM
850 SCMh
- Current Draw 19 Amps @ 13.8 VDC
9 Amps @ 27.6 VDC

Applications

- Over-the-Road Vehicles
- Industrial Vehicles
- Heavy Duty Off-Highway Equipment
- Mining Vehicles

Features

- Single Source or Auxiliary Heater
- Heavy Duty Steel Construction
- (2) 5/8" O.D. Tube Connections
- 3-Speed Resistor
- Durable Double Wheel Plastic Blower
- (4) 4" Front and (2) 4" Side Air Outlet Openings
- (2) Knockouts in Cover for Optional Air Outlets

Warranty

- 1 year limited warranty parts and labor

Model: KH-500 Heater

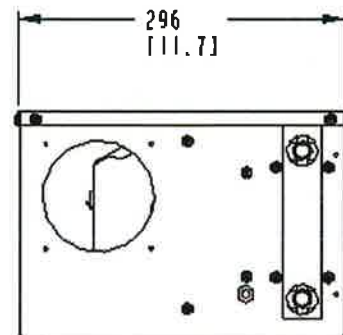
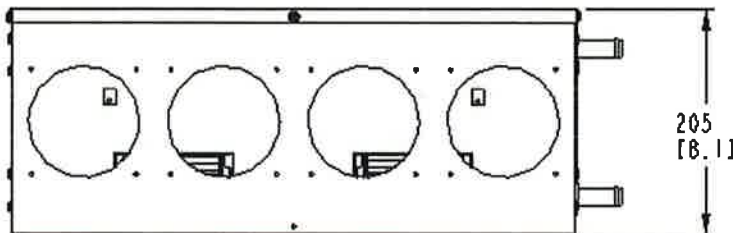
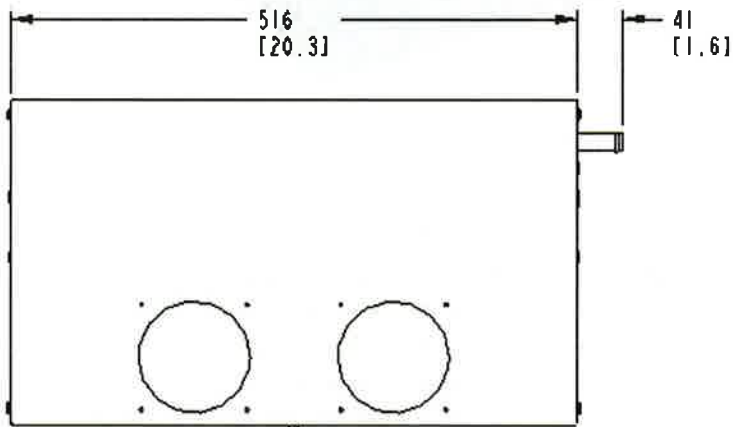


2390 Blackhawk Road • Rockford, IL 61125, USA
815-874-7821 • fax 815-874-2144 • 800-499-6849
www.kysorhvac.com



Weights and Dimensions

• Weight	24 lbs	10.9 kg
• Width	20.3 in	516 mm
• Height	8.1 in	205 mm
• Depth	11.7 in	296 mm



Model: KH-900 Heater



2390 Blackhawk Road • Rockford, IL 61125, USA
815-874-7821 • fax 815-874-2144 • 800-499-6849
www.kysorhvac.com



Technical Specifications

- Performance SAE J638 @ 18.2 LPM (4.8 GPM)
30,000 BTU/h
8.8 kW
- Air Flow 325 SCFM
552 SCMh
- Current Draw 3.6 Amps @ 12 VDC
1.8 Amps @ 24 VDC

Applications

- Over-the-Road Vehicles
- Industrial Vehicles
- Light Duty Off-Highway Equipment

Features

- Auxiliary Heater
- Heavy Duty Steel Construction
- (2) 5/8" O.D. Tube Connections
- 3-Speed Resistor
- Stylish Compact Round Design
- Shock Mounted Motor

Warranty

- 1 year limited warranty parts and labor

Model: KH-900 Heater



2390 Blackhawk Road • Rockford, IL 61125, USA
815-874-7821 • fax 815-874-2144 • 800-499-6849
www.kysorhvac.com



Weights and Dimensions

• Weight	11.25 lbs	5.1 kg
• Width	13.75 in	350 mm
• Height	12.25 in	311 mm
• Depth	5 in	127 mm

